

Repair Desk  
1.2m/1.5m

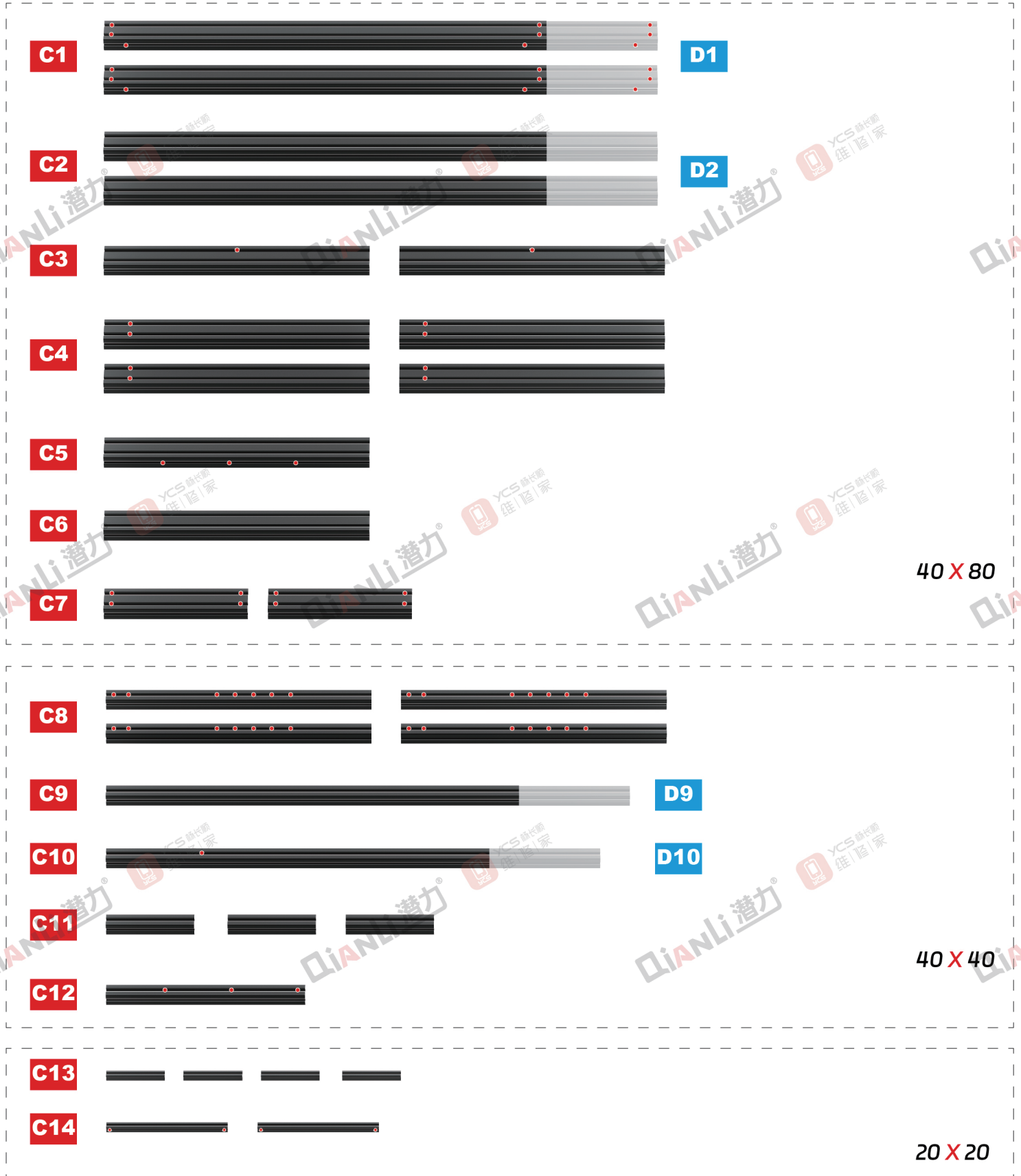
# NORMAL

## Installation Instructions

QIANLi 潜力® YCS 成长家 佳|匠|家

 Aluminum Profile

\*Please lay out the aluminum profiles according to the **specifications, lengths, and hole positions**, and select the corresponding aluminum profiles for each respective step.



\*This installation guide is based on the 1.2m model, with the differing materials for the 1.5m model marked as "D", while the rest remain the same.



# Installation Accessories



cup head hex socket screw  
**M8\*50 x 30**



cup head hex socket screw  
**M8\*90 x 11**



cup head hex socket screw  
**M6\*40 x 4**



cup head hex socket screw  
**M6\*35 x 8**



cup head hex socket screw  
**M6\*25 x 4**



button head hex socket screw  
**M6\*16 x 64**



washer  
**M6\*14 x 64**



T-nut  
**40style x 72**



L-bracket  
**4080 x 4**



corner bracket  
**4080 x 12**



end cover  
**4080 x 8**



end cover  
**4040 x 4**



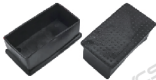
end cover  
**2020 x 4**



flat bracket  
**40style x 10**



flat bracket  
**20style x 6**



foot cover  
**4080 x 4**



LED panel light  
**300\*900 x 1**  
(1.2m model)



LED panel light  
**300\*1200 x 1**  
(1.5m model)



three-pin power cord with bare end  
**2m x 1**



hex key  
**set 9 piece**



microscope bracket kit  
**lower base plate**



microscope bracket kit  
**upper base plate**



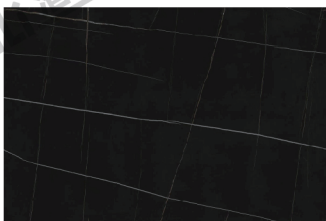
microscope bracket kit  
**pillar**



microscope bracket kit  
**M8\*45 screws x 5**



# board



customized stone slab  
**1200\*800mm (1.2m model)**  
**1500\*800mm (1.5m model)**



customized multi-layer solid wood board  
**1200\*310mm (1.2m model)**  
**1500\*310mm (1.5m model)**



customized multi-layer solid wood board  
**290\*180mm x 2**



# 01 Assemble Desktop Frame

## Installation Accessories



cup head hex socket screw  
M8\*50 x 18



cup head hex socket screw  
M8\*90 x 4



foot cover  
4080 x 4



# 02 Assemble Upper Shelf

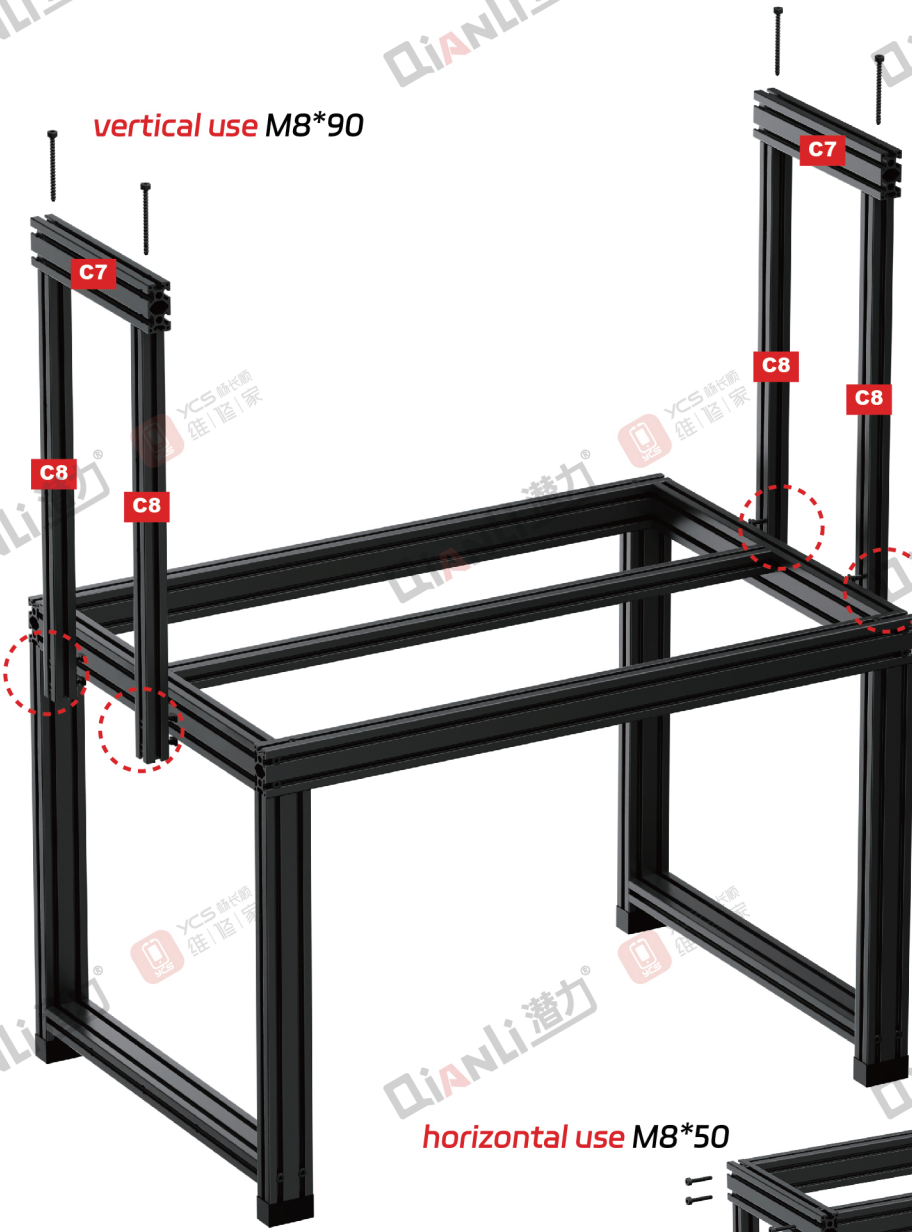
## Installation Accessories



- cup head hex socket screw M8\*50 x 8
- cup head hex socket screw M8\*90 x 4
- cup head hex socket screw M6\*35 x 8



Pre-lock M6\*35 with T-nuts for horizontal use



horizontal use M8\*50



\*The recommended position for installing the upper shelf is centered, but it can be positioned towards the front or back based on user preference

### 03 Assemble the Middle Small Shelf

#### Installation Accessories



cup head hex socket screw  
M6\*40 x 4



cup head hex socket screw  
M6\*25 x 4



The vertical rods of the upper shelf have 4 pre-set positions for installing the middle shelves based on usage preferences.





# 04 Assemble Computer Host Bracket

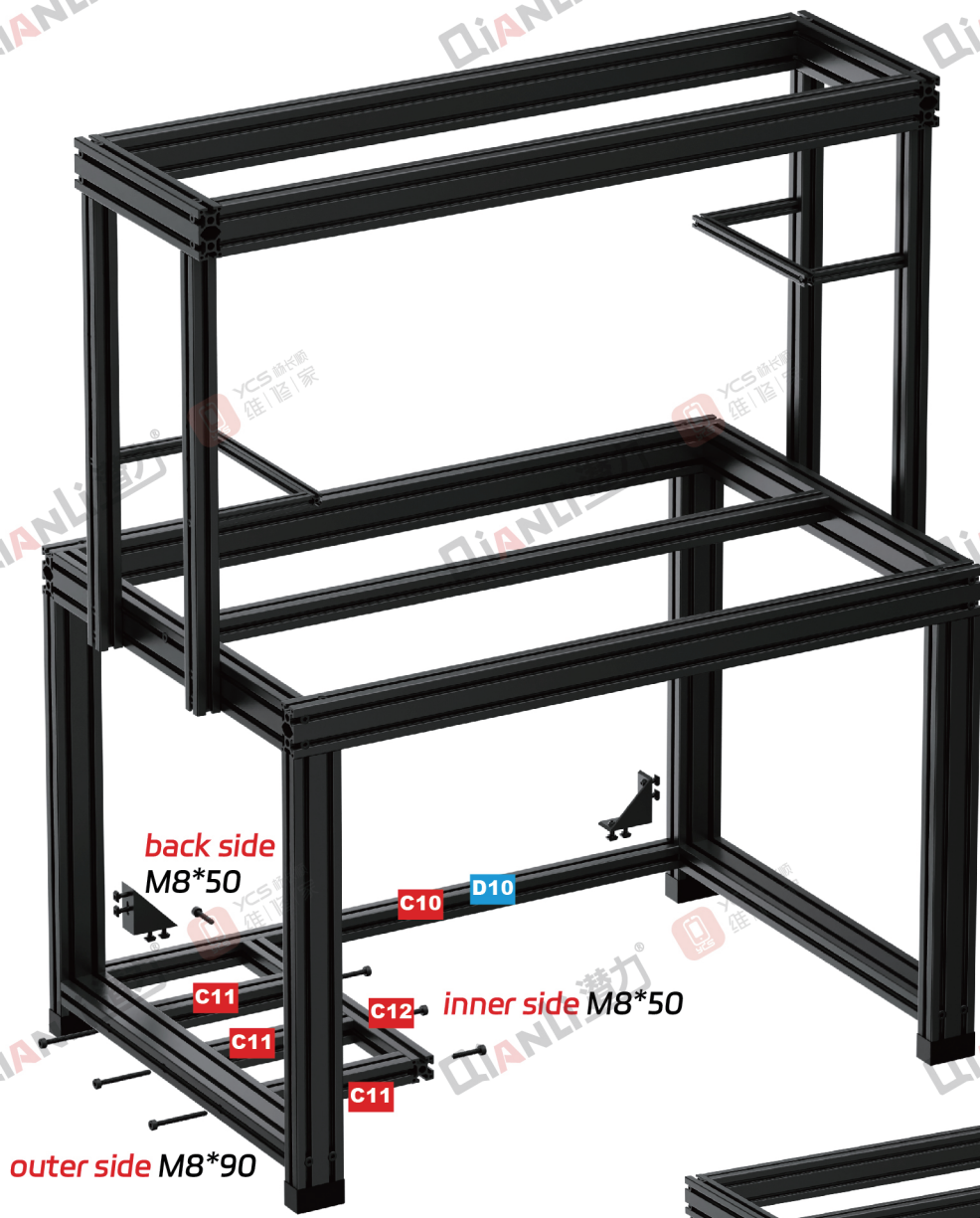
## Installation Accessories



- cup head hex socket screw M8\*50 x 4
- cup head hex socket screw M8\*90 x 3
- button head hex socket screw M6\*16 x 8
- washer M6\*14 x 8
- T-nut 40style x 8
- corner bracket 4080 x 2



All corner connectors should be pre-assembled.  
 M6\*16 button head hex socket screw + M6 washer + 40style T-nut  
 During installation, slide them into the corresponding slot and lock them tightening.





# 05 Assemble Reinforcement Corner Brackets and Other Accessories

## Installation Accessories



button head hex socket screw  
**M6\*16 x 56**

T-nut  
**40style x 56**

washer  
**M6\*14 x 56**

end cover  
**4080 x 8**

end cover  
**4040 x 4**

end cover  
**2020 x 4**

L-bracket  
**4080 x 4**

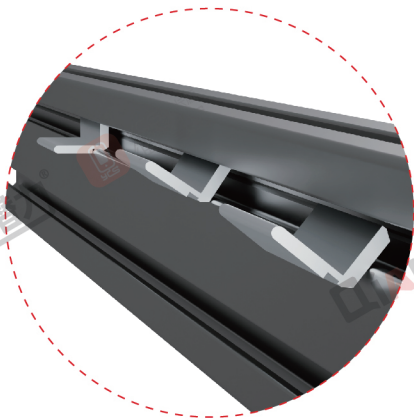
corner bracket  
**4080 x 10**

flat bracket  
**40style x 10**

flat bracket  
**20style x 6**



All corner connectors should be pre-assembled.  
**M6\*16** button head hex socket screw + **M6** washer + **40style** T-nut  
During installation, slide them into the corresponding slot and lock them tightening.



The flat bracket is used to hold LED panel lights and wood board horizontally.  
Insert it into the profile slot as shown in the diagram



# 06 Place LED Panel Light and Wood Board

## Installation Accessories



LED panel light  
300\*900 x 1  
(1.2m model)



LED panel light  
300\*1200 x 1  
(1.5m model)



three-pin power cord with bare end  
2m x 1



Connect the **live and neutral wires** of the three-pin power cord to the LED driver terminals and ensure proper insulation. (Any matching connection is acceptable)



board



customized stone slab  
1200\*800mm (1.2m model)  
1500\*800mm (1.5m model)



customized multi-layer solid wood board  
1200\*310mm (1.2m model)  
1500\*310mm (1.5m model)



customized multi-layer solid wood board  
290\*180mm x 2





# 07 Install Microscope Bracket Base

## Installation Accessories



- microscope bracket kit lower base plate
- microscope bracket kit upper base plate

- microscope bracket kit pillar
- microscope bracket kit M8\*45 screws x 5

The microscope pillar and base fit most market standard brackets and can be used with them as needed

