

Repair Desk

1.2m/1.5m

LITE

Installation Instructions

Aluminum Profile

*Please lay out the aluminum profiles according to the **specifications, lengths, and hole positions**, and select the corresponding aluminum profiles for each respective step.



*This installation guide is based on the 1.2m model, with the differing materials for the 1.5m model marked as "B", while the rest remain the same.



Installation Accessories



cup head hex socket screw
M8*40 x 22



cup head hex socket screw
M8*70 x 8



cup head hex socket screw
M6*35 x 4



cup head hex socket screw
M6*25 x 12



button head hex socket screw
M6*12 x 64



washer
M6*14 x 64



T-nut
30style x 72



L-bracket
3060 x 4



corner bracket
3060 x 12



foot cover
3060 x 4



end cover
3060 x 8



end cover
3030 x 4



end cover
2020 x 4



flat bracket
30style x 10



flat bracket
20style x 6



LED panel light
300*900 x 1
(1.2m model)



LED panel light
300*1200 x 1
(1.5m model)



three-pin power cord with bare end
2m x 1



hex key
set 9 piece



microscope bracket kit
lower base plate



microscope bracket kit
upper base plate



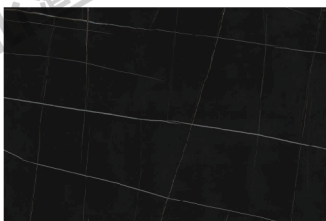
microscope bracket kit
pillar



microscope bracket kit
M8*45 screws x 5



board



customized stone slab
1200*800mm (1.2m model)
1500*800mm (1.5m model)



customized multi-layer solid wood board
1200*310mm (1.2m model)
1500*310mm (1.5m model)



customized multi-layer solid wood board
290*180mm x 2

01 Assemble Desktop Frame

Installation Accessories



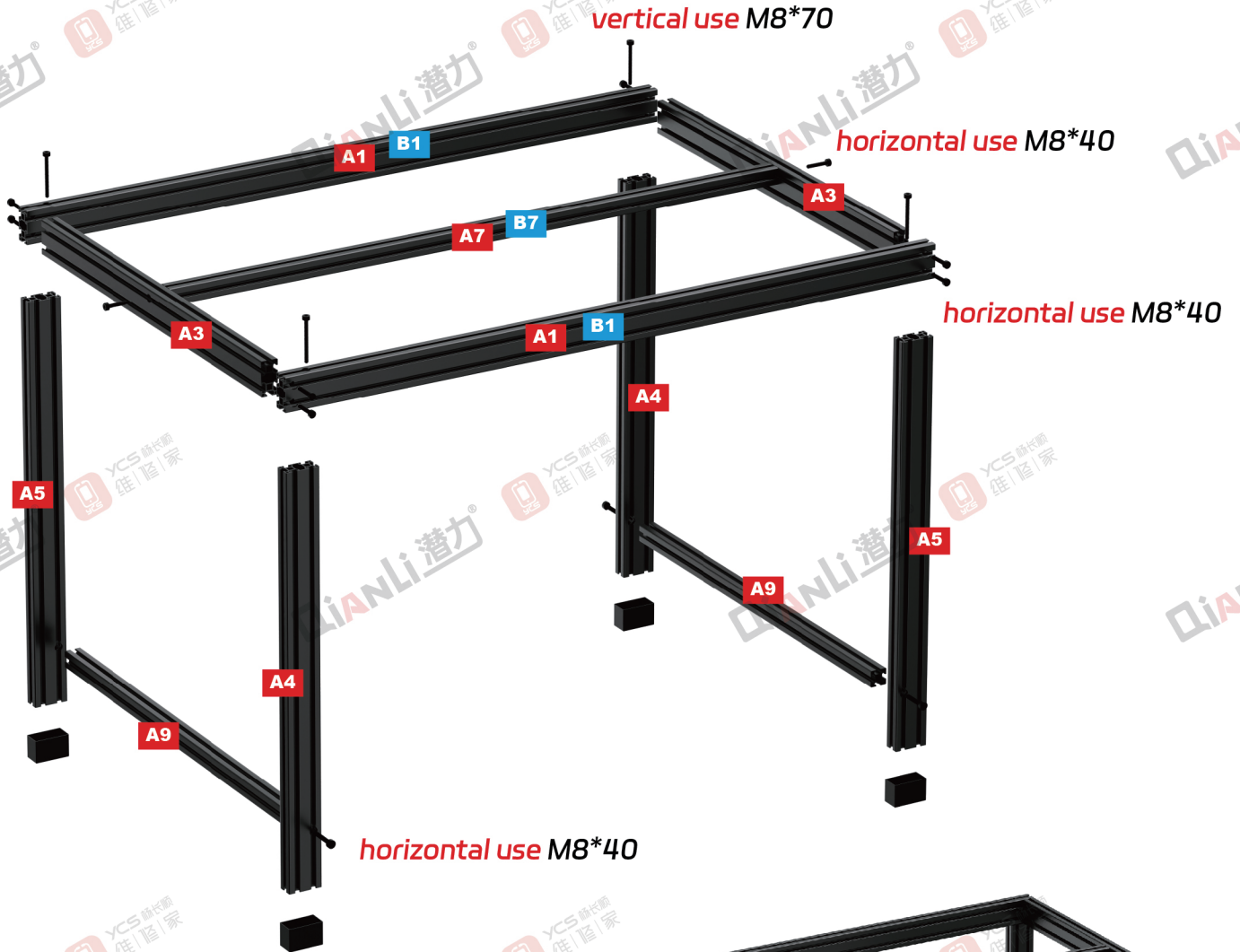
cup head hex socket screw
M8*40 x 14



cup head hex socket screw
M8*70 x 4



foot cover
3060 x 4



02 Assemble Upper Shelf

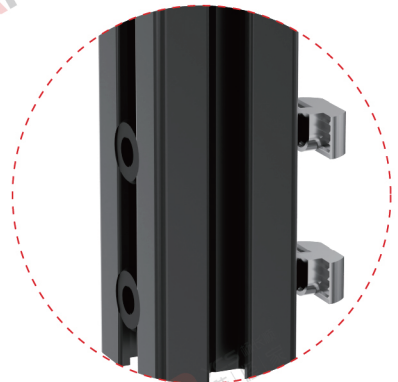
Installation Accessories



- cup head hex socket screw M8*40 x 8
- cup head hex socket screw M8*70 x 4
- cup head hex socket screw M6*25 x 8



Pre-lock M6*25 with T-nuts for horizontal use



vertical use M8*70

horizontal use M8*40



*The recommended position for installing the upper shelf is centered, but it can be positioned towards the front or back based on user preference

03 Assemble the Middle Small Shelf

Installation Accessories



cup head hex socket screw
M6*35 x 4



cup head hex socket screw
M6*25 x 4



inner side M6*25

outer side M6*35

The vertical rods of the upper shelf have 4 pre-set positions for installing the middle shelves based on usage preferences.



04 Assemble Reinforcement Corner Brackets and Other Accessories



Installation Accessories



button head hex socket screw
M6*12 x 64

washer
M6*14 x 64

T-nut
30style x 64

end cover
3060 x 8

end cover
3030 x 4

end cover
2020 x 4

L-bracket
3060 x 4

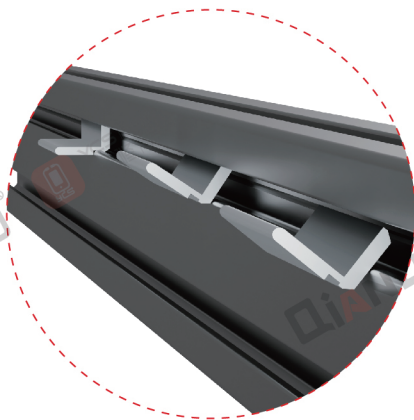
corner bracket
3060 x 12

flat bracket
30style x 10

flat bracket
20style x 6



All corner connectors should be pre-assembled.
M6*12 button head hex socket screw + M6 washer + 30style T-nut
During installation, slide them into the corresponding slot and lock them tightening.



The flat bracket is used to hold LED panel lights and wood board horizontally.
Insert it into the profile slot as shown in the diagram



05 Place LED Panel Light and Wood Board

Installation Accessories



LED panel light
300*900 x 1
(1.2m model)



LED panel light
300*1200 x 1
(1.5m model)



three-pin power cord with bare end
2m x 1



Connect the **live and neutral wires** of the three-pin power cord to the LED driver terminals and ensure proper insulation. (Any matching connection is acceptable)



board



customized stone slab
1200*800mm (1.2m model)
1500*800mm (1.5m model)



customized multi-layer solid wood board
1200*310mm (1.2m model)
1500*310mm (1.5m model)



customized multi-layer solid wood board
290*180mm x 2

06 Install Microscope Bracket Base

Installation Accessories



microscope bracket kit lower base plate



microscope bracket kit upper base plate



microscope bracket kit pillar



microscope bracket kit M8*45 screws x 5



The microscope pillar and base fit most market standard brackets and can be used with them as needed

